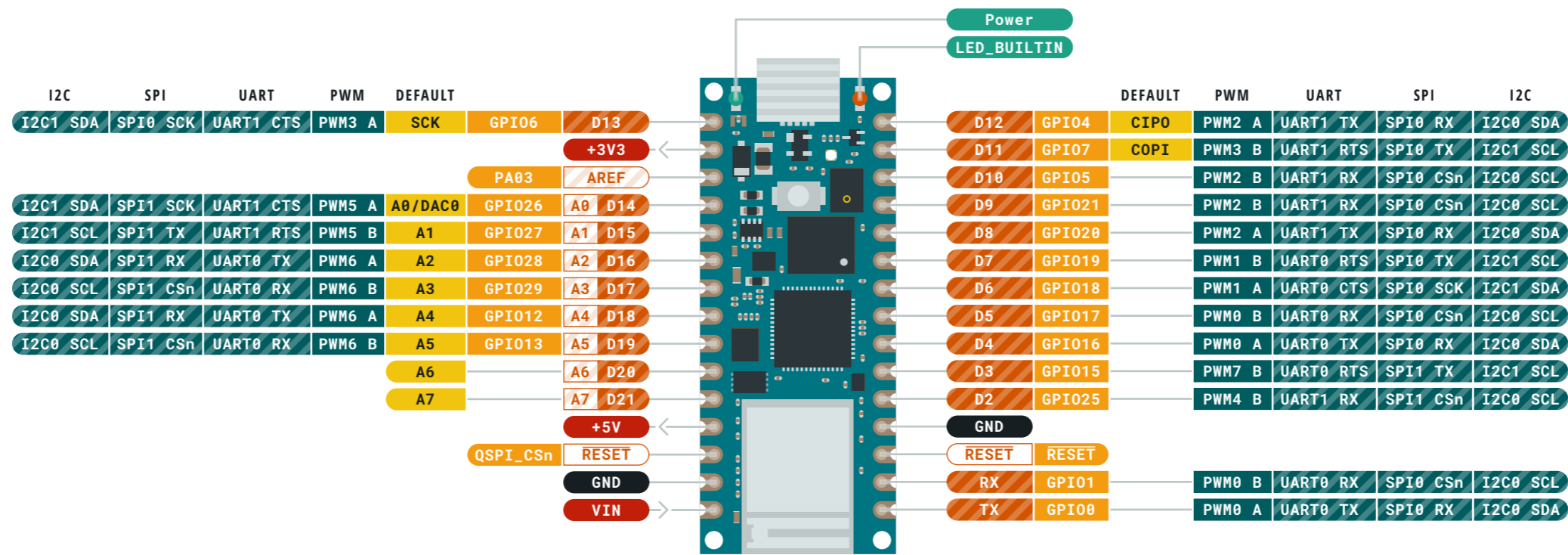


- Ground
- Power
- LED
- Internal Pin
- SWD Pin
- Digital Pin
- Analog Pin
- Other Pin
- Microcontroller's Port
- Default

- ⚠ **MAXIMUM** I/O supply voltage is 3.63V
- ⚠ **MAXIMUM** GPIO input voltage is 3.3V
- ⚠ **MAXIMUM** sum of all current being sunk into GPIO and QSPI pins is 50mA

VIN Input voltage to the board.



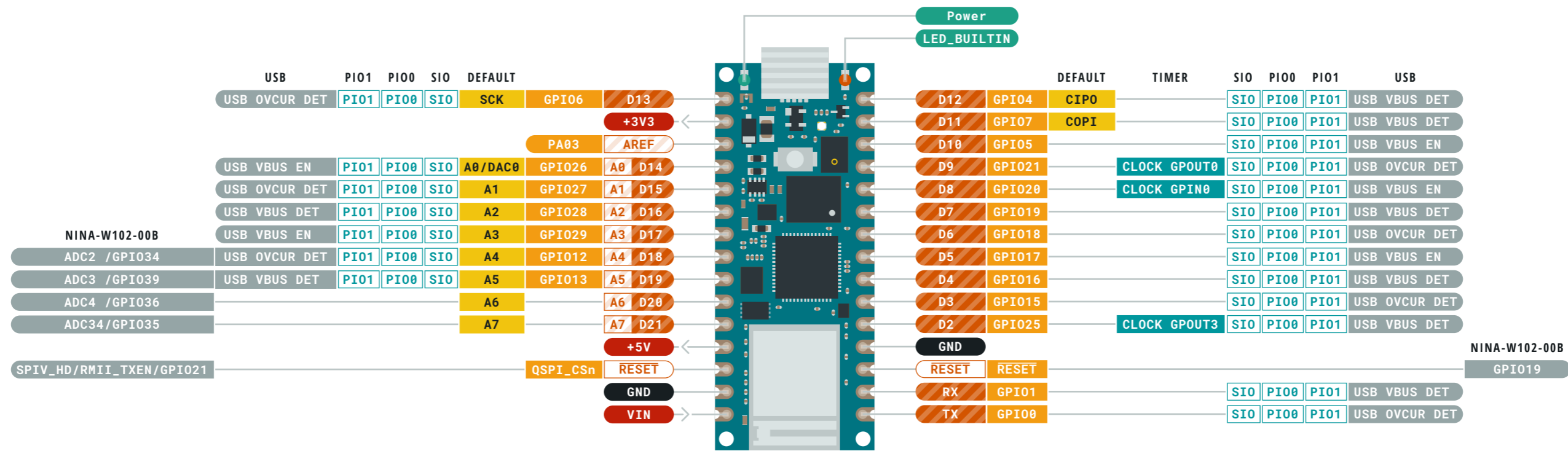


- Ground
- Power
- LED
- Internal Pin
- SWD Pin
- Digital Pin
- Analog Pin
- Other Pin
- Microcontroller's Port
- Default
- Analog
- Communication
- Timer
- GPIO

- ⚠ **MAXIMUM** I/O supply voltage is 3.63V
- ⚠ **MAXIMUM** GPIO input voltage is 3.3V
- ⚠ **MAXIMUM** sum of all current being sunk into GPIO and QSPI pins is 50mA

VIN Input voltage to the board.



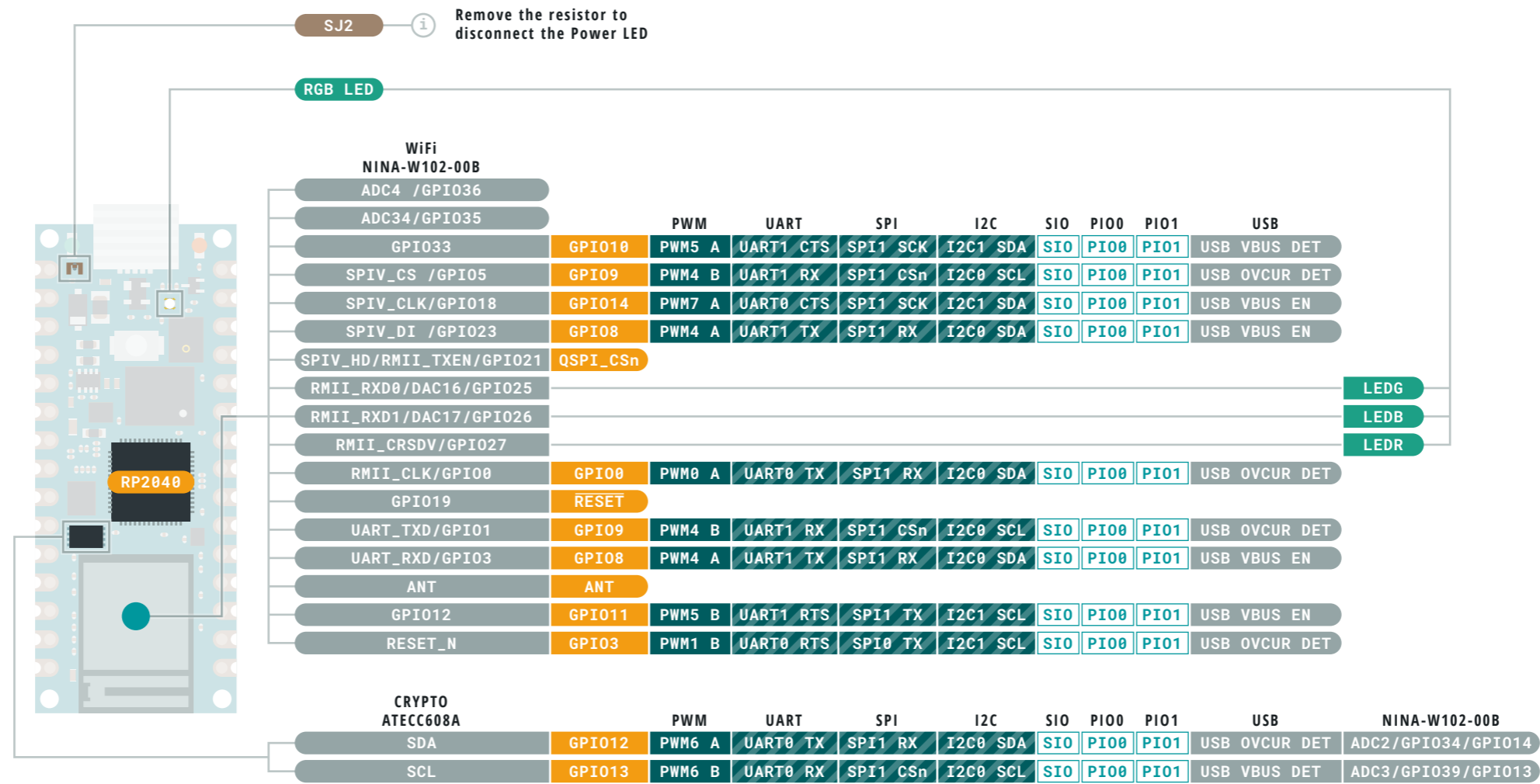


- Ground
- Power
- LED
- Internal Pin
- SWD Pin
- Digital Pin
- Analog Pin
- Other Pin
- Microcontroller's Port
- Default
- Analog
- Communication
- Timer
- GPIO

- ⚠ **MAXIMUM** I/O supply voltage is 3.63V
- ⚠ **MAXIMUM** GPIO input voltage is 3.3V
- ⚠ **MAXIMUM** sum of all current being sunk into GPIO and QSPI pins is 50mA

VIN Input voltage to the board.

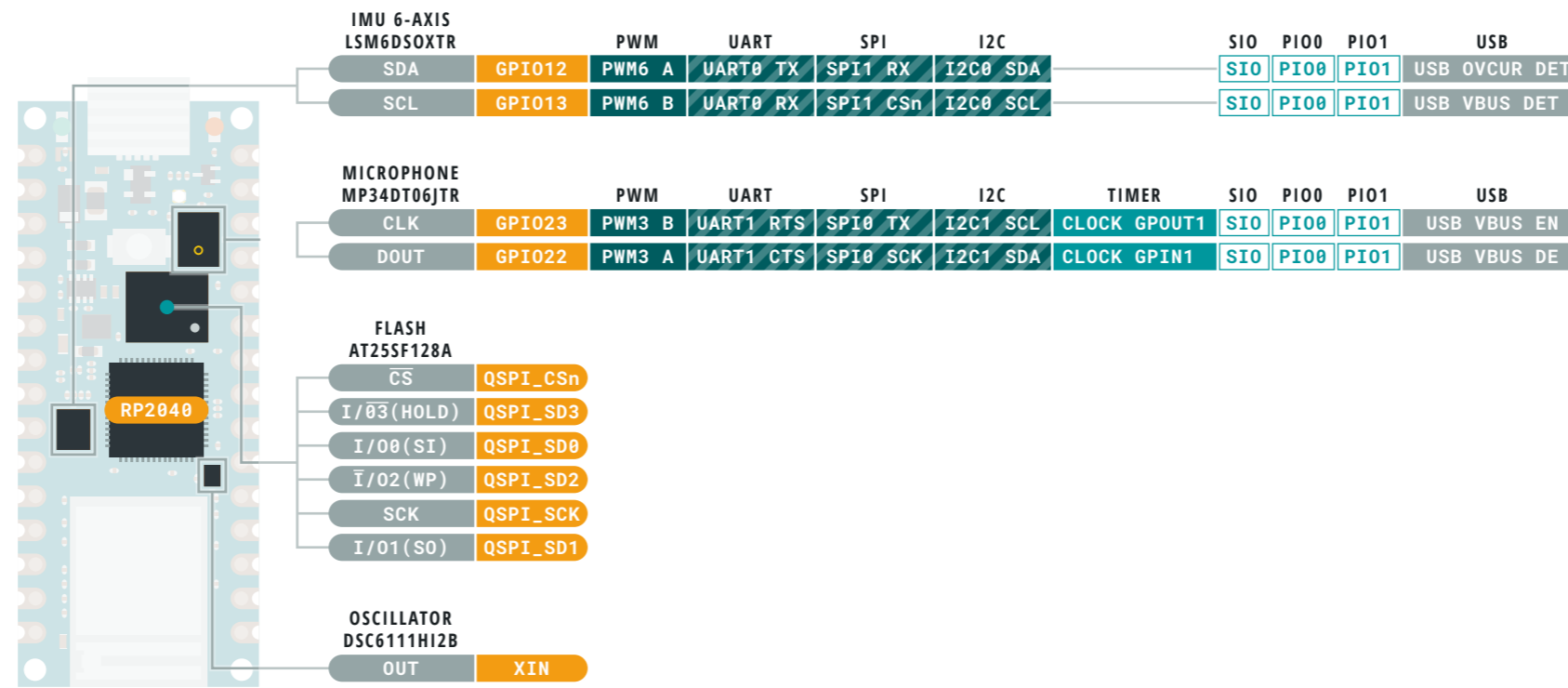




- Ground
- Power
- LED
- Internal Pin
- SWD Pin
- Digital Pin
- Analog Pin
- Other Pin
- Microcontroller's Port
- Default
- Analog
- Communication
- Timer
- GPIO

- ⚠ **MAXIMUM** I/O supply voltage is 3.63V
 - ⚠ **MAXIMUM** GPIO input voltage is 3.3V
 - ⚠ **MAXIMUM** sum of all current being sunk into GPIO and QSPI pins is 50mA
- VIN** Input voltage to the board.



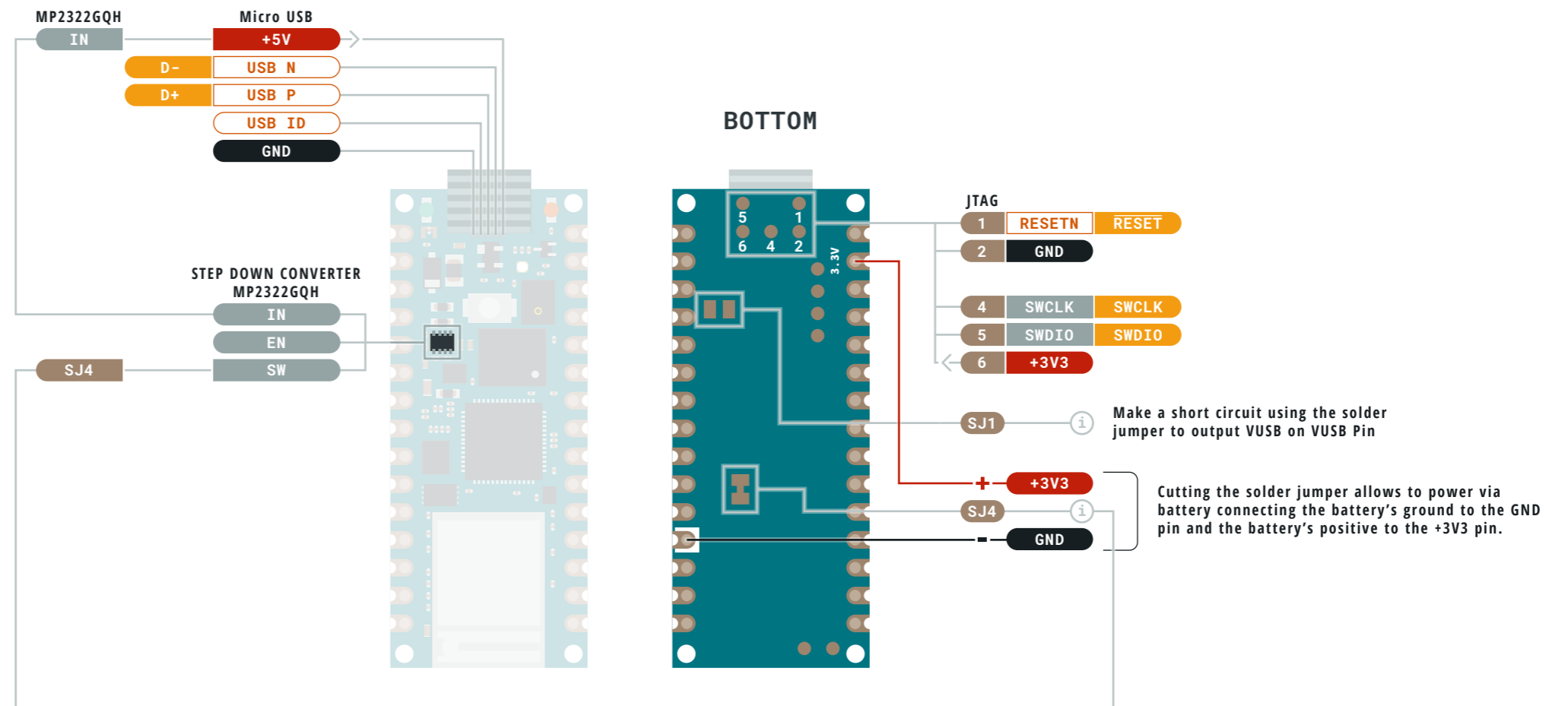


- Ground
- Power
- LED
- Internal Pin
- SWD Pin
- Digital Pin
- Analog Pin
- Other Pin
- Microcontroller's Port
- Default
- Analog
- Communication
- Timer
- GPIO

- ⚠ **MAXIMUM** I/O supply voltage is 3.63V
- ⚠ **MAXIMUM** GPIO input voltage is 3.3V
- ⚠ **MAXIMUM** sum of all current being sunk into GPIO and QSPI pins is 50mA

VIN Input voltage to the board.





- Ground
- Power
- LED
- Internal Pin
- SWD Pin
- Digital Pin
- Analog Pin
- Other Pin
- Microcontroller's Port
- Default

- ⚠ **MAXIMUM** I/O supply voltage is 3.63V
- ⚠ **MAXIMUM** GPIO input voltage is 3.3V
- ⚠ **MAXIMUM** sum of all current being sunk into GPIO and QSPI pins is 50mA

VIN Input voltage to the board.

