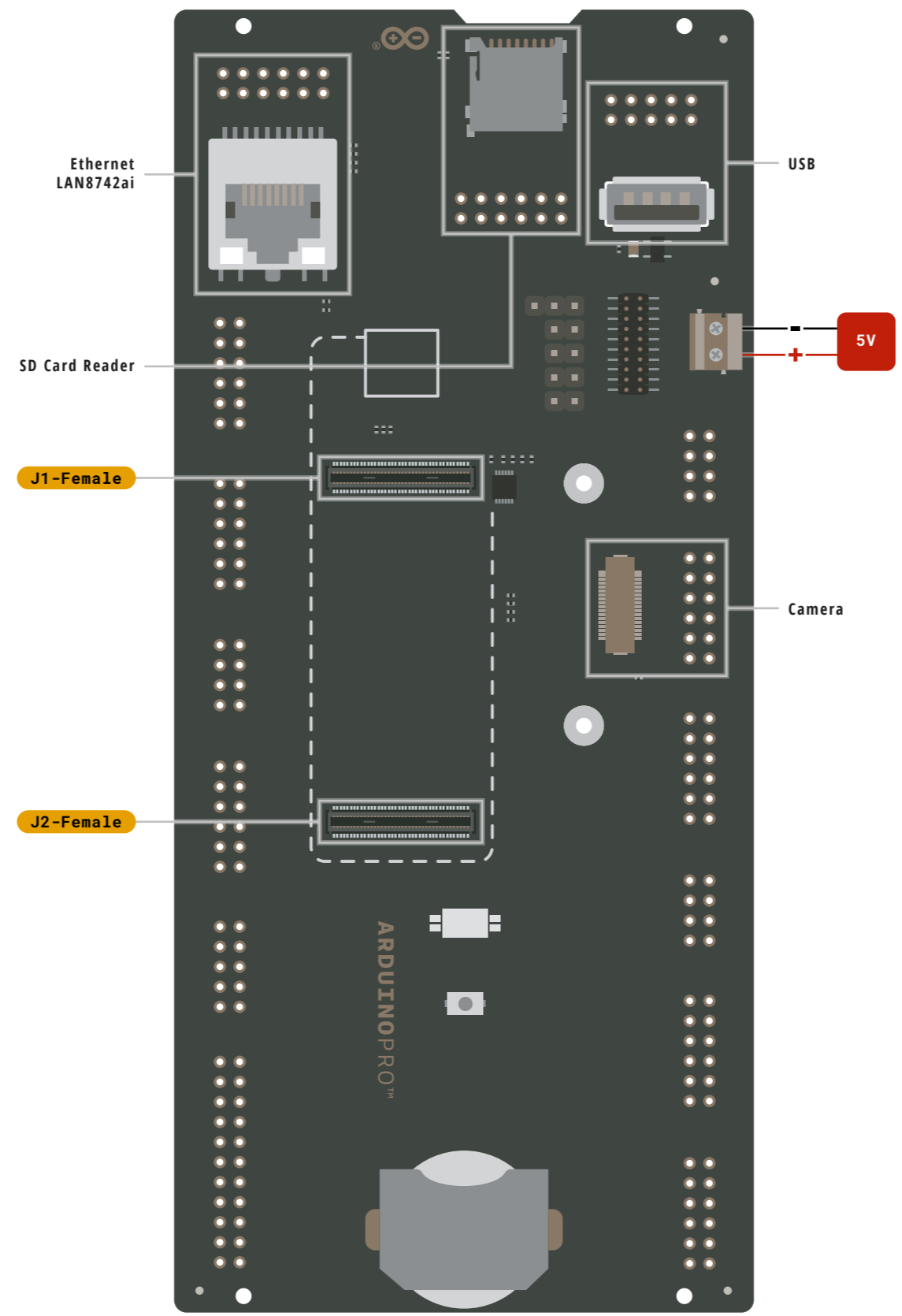


TOP VIEW



Legend:

■ Power

Power Input

Power Output

■ Ground

■ GPIO Digital External

□ Analog External

■ Main Part

■ High Density Connector pin

■ Internal Component

■ Other Pins (Reset, System Control, Debugging)

LED

RGB LED

□ Short Circuit allowed functions

POWER LIMITS
depend on the board used

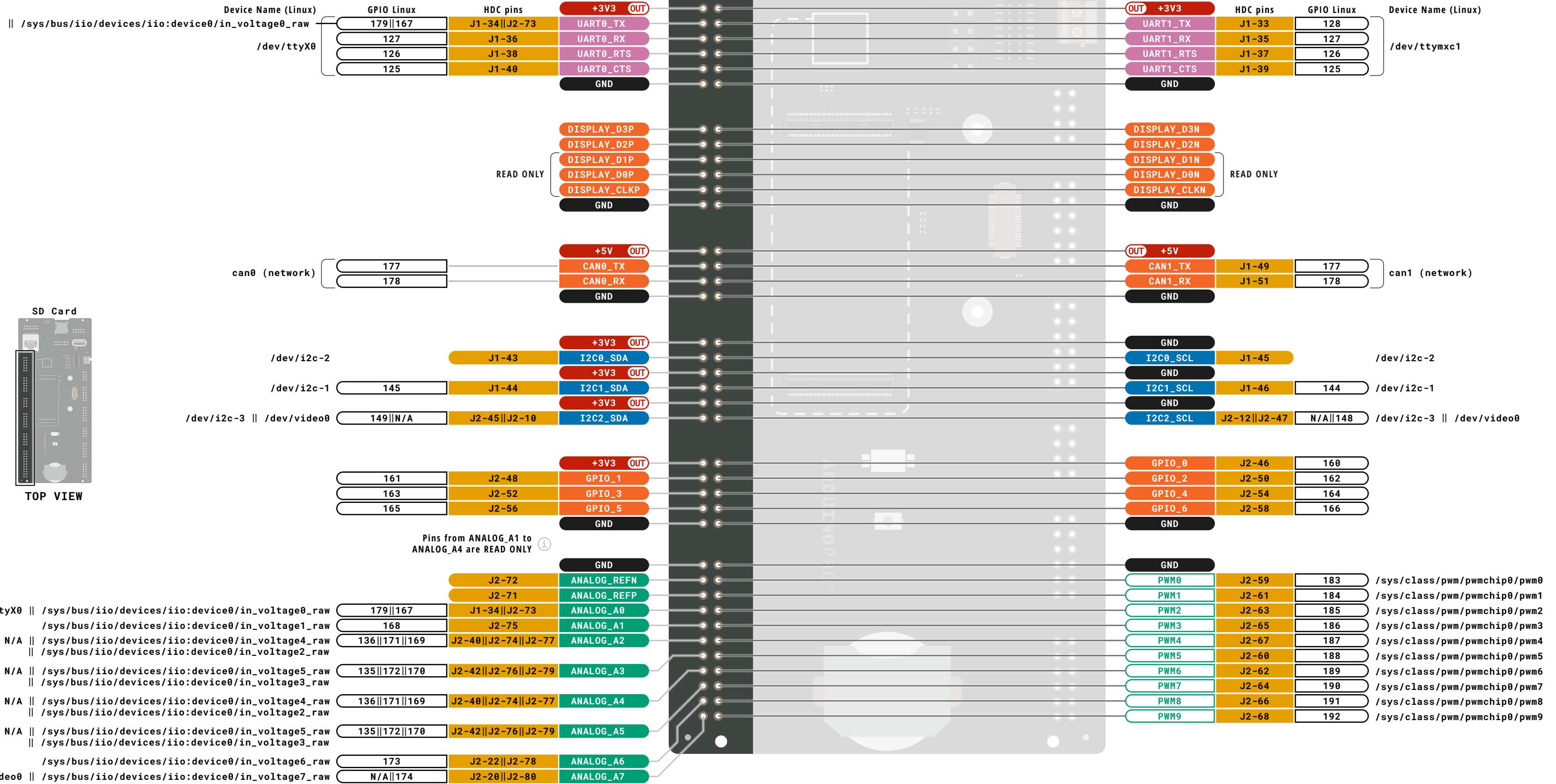
CIP0/COPI have previously been referred to as MISO/MOSI

PORTENTA BREAKOUT
ARDUINO

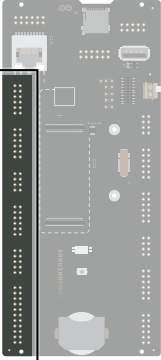
SKU code: ASX00031
Full Pinout - Page 1 of 7
Last update: 28 Nov, 2022

DOCS . ARDUINO . CC This work is licensed under the Creative Commons Attribution-ShareAlike 4.0 International License. To view a copy of this license, visit <http://creativecommons.org/licenses/by-sa/4.0/> or send a letter to Creative Commons, PO Box 1866, Mountain View, CA 94042, USA.

TOP VIEW



SD Card



TOP VIEW

Legend:

- Power: Power Input (IN), Power Output (OUT), Ground
- GPIO Digital External (Orange), Analog External (Light Orange), Main Part (Yellow), Internal Component (Grey), Other Pins (Reset, System Control, Debugging) (Dark Grey)
- I2C (Blue), SPI (Light Blue), Other SERIAL Communication (Light Blue), Analog (Green), PWM/Timer (Light Green)
- Default (D in circle)
- LED: LED (Red), RGB LED (Rainbow), Short Circuit allowed functions (Square with diagonal line)

POWER LIMITS depend on the board used

CIP0/COPI have previously been referred to as MISO/MOSI

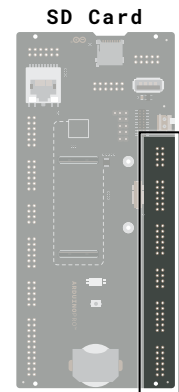
PORTENTA BREAKOUT ARDUINO

SKU code: ASX00031
Full Pinout - Page 2 of 7
Last update: 28 Nov, 2022

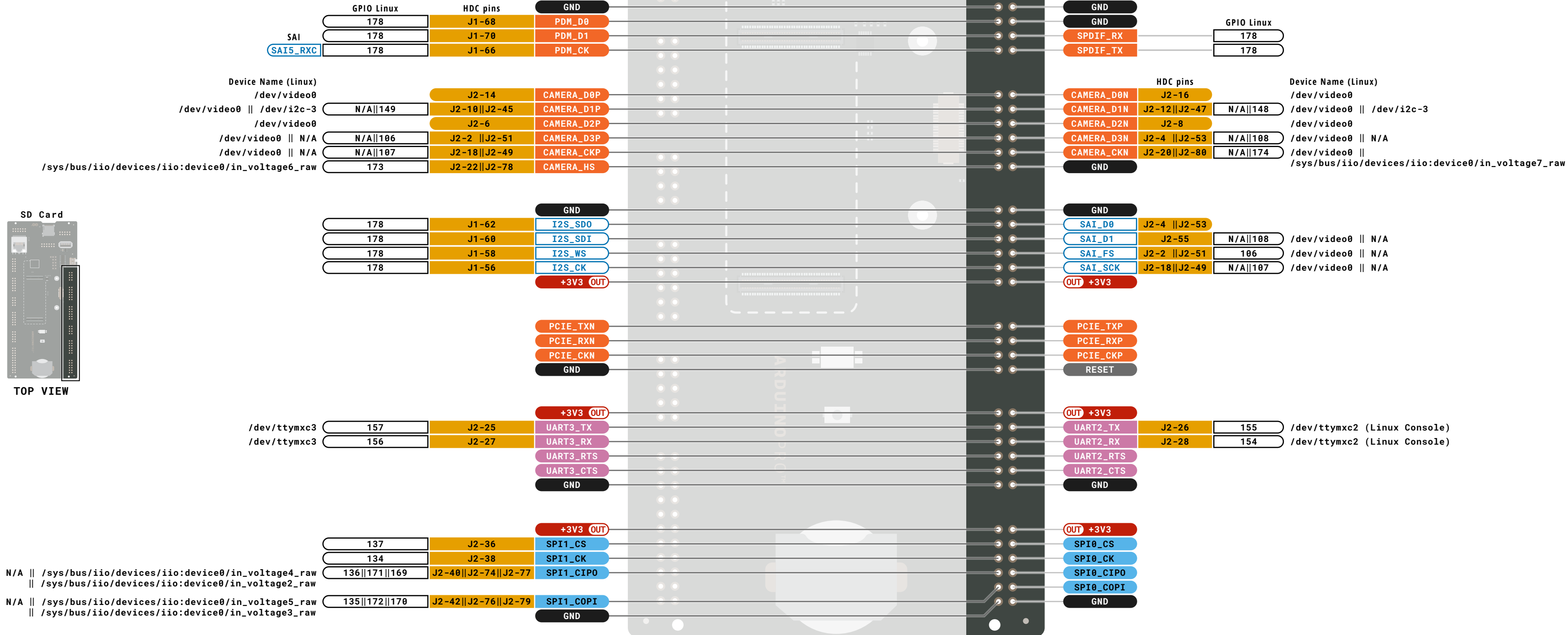
DOCS.ARDUIINO.CC

This work is licensed under the Creative Commons Attribution-ShareAlike 4.0 International License. To view a copy of this license, visit <http://creativecommons.org/licenses/by-sa/4.0/> or send a letter to Creative Commons, PO Box 1866, Mountain View, CA 94042, USA.

TOP VIEW



TOP VIEW



Legend:

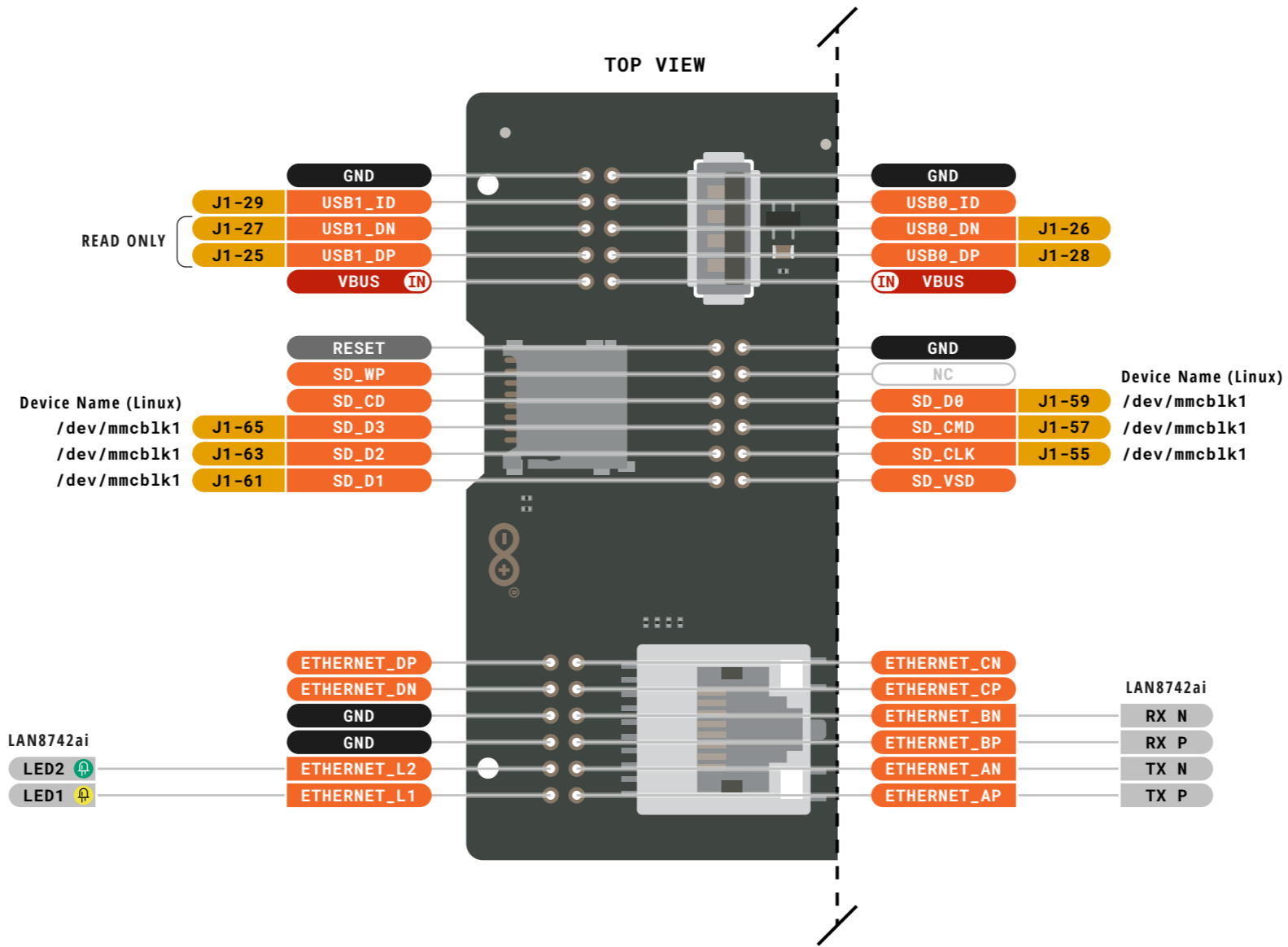
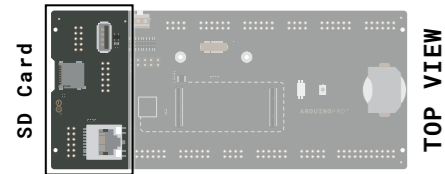
- Power: Power Input, Power Output, Ground
- GPIO Digital External: Analog External, Main Part, Other Pins (Reset, System Control, Debugging)
- I2C: I2C, SPI, UART/USART, Analog, PWM/Timer
- Default: Default, Default, Default
- LED: LED, RGB LED, Short Circuit allowed functions

POWER LIMITS depend on the board used
 CIP0/COPI have previously been referred to as MISO/MOSI

PORTENTA BREAKOUT ARDUINO

SKU code: ASX00031
 Full Pinout - Page 3 of 7
 Last update: 28 Nov, 2022

DOCS . ARDUINO . CC
 This work is licensed under the Creative Commons Attribution-ShareAlike 4.0 International License. To view a copy of this license, visit <http://creativecommons.org/licenses/by-sa/4.0/> or send a letter to Creative Commons, PO Box 1866, Mountain View, CA 94042, USA.



Legend:

- Power
- Ground
- IN Power Input
- OUT Power Output
- GPIO Digital External
- Analog External
- Main Part
- High Density Connector pin
- Internal Component
- Other Pins (Reset, System Control, Debugging)
- I2C
- SPI
- UART/USART
- Analog
- PWM/Timer
- D Default
- D Default
- D Default
- D Default
- ⚠ LED
- ⚠ RGB LED
- Short Circuit allowed functions

⚠ POWER LIMITS depend on the board used

i CIP0/COPI have previously been referred to as MISO/MOSI

PORTENTA BREAKOUT

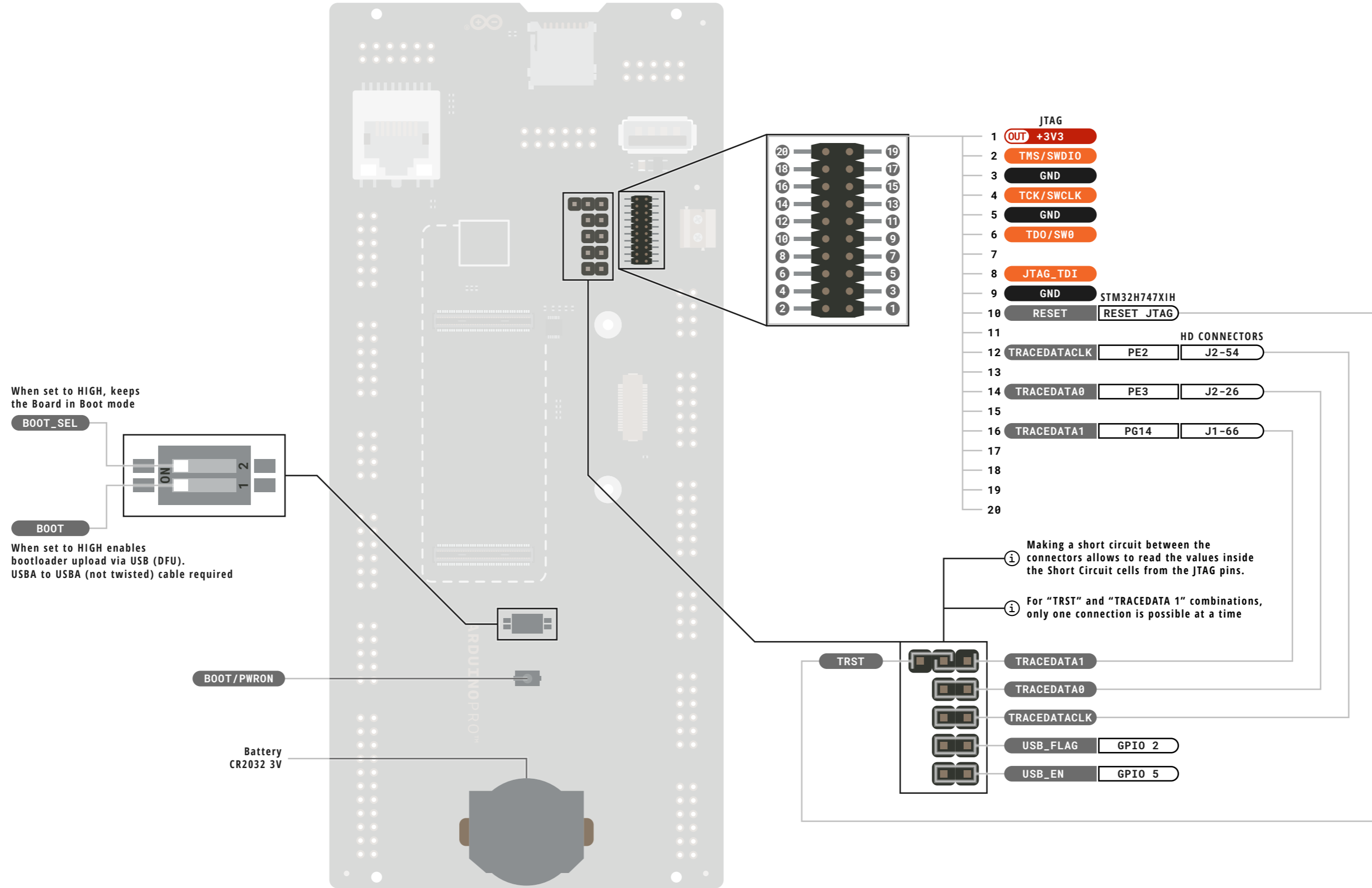
ARDUINO

SKU code: ASX00031
Full Pinout - Page 4 of 7
Last update: 28 Nov, 2022

DOCS . ARDUINO . CC

This work is licensed under the Creative Commons Attribution-ShareAlike 4.0 International License. To view a copy of this license, visit <http://creativecommons.org/licenses/by-sa/4.0/> or send a letter to Creative Commons, PO Box 1866, Mountain View, CA 94042, USA.

TOP VIEW



Legend:

- Power
- Ground

- Power Input
- Power Output

- GPIO Digital External
- Analog External
- Main Part
- High Density Connector pin
- Internal Component
- Other Pins (Reset, System Control, Debugging)

- I2C
- SPI
- UART/USART
- Other SERIAL Communication
- Analog
- PWM/Timer
- Default
- Default
- Default
- Default

- LED
- RGB LED
- Short Circuit allowed functions

POWER LIMITS depend on the board used

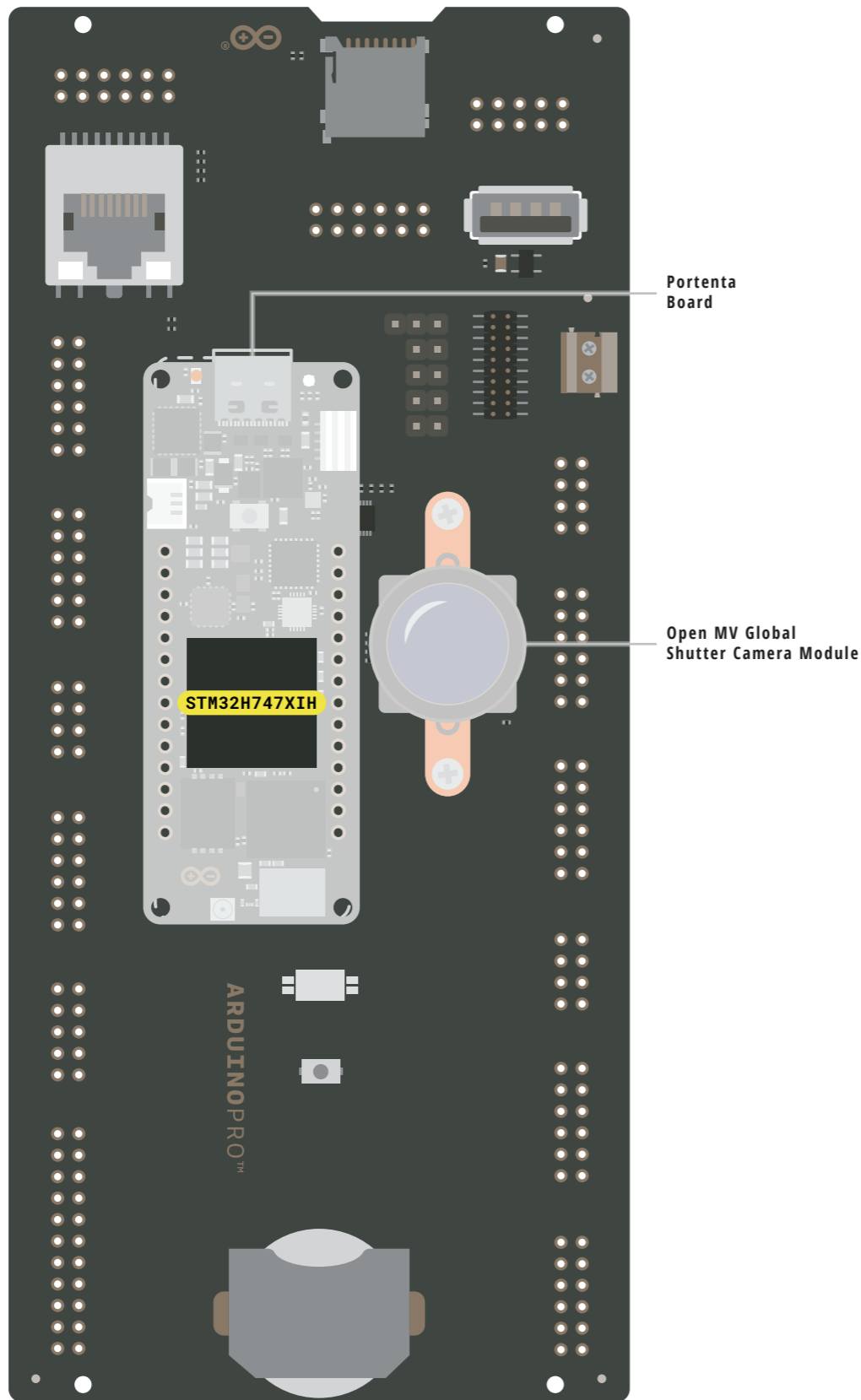
CIP0/COPI have previously been referred to as MISO/MOSI



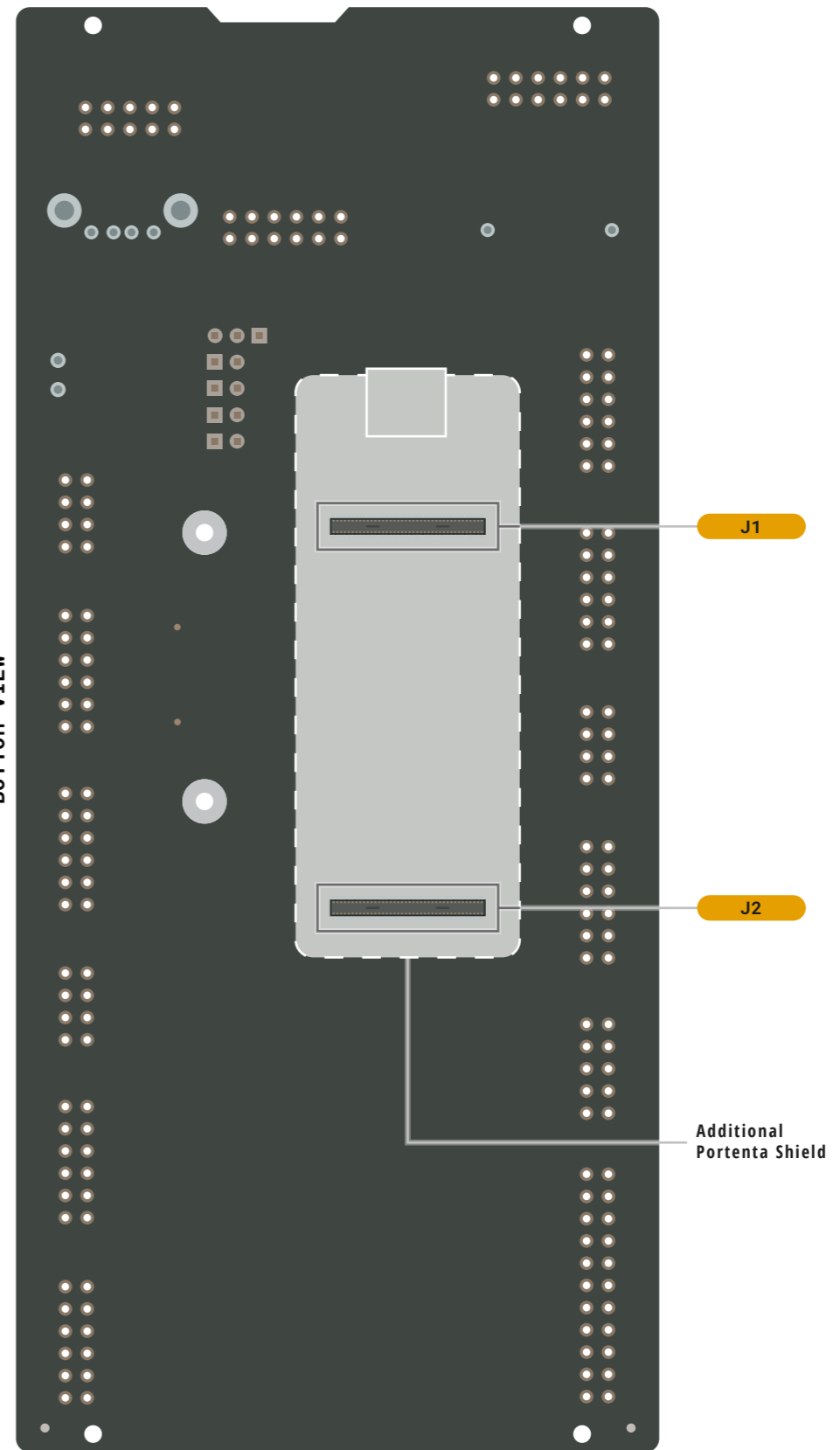
SKU code: ASX00031
Full Pinout - Page 5 of 7
Last update: 28 Nov, 2022



TOP VIEW



BOTTOM VIEW



Legend:

- Power
- Ground

- Power Input
- Power Output

- GPIO Digital External
- Analog External
- Main Part
- High Density Connector pin
- Internal Component
- Other Pins (Reset, System Control, Debugging)

- I2C
- SPI
- UART/USART
- Other SERIAL Communication
- Analog
- PWM/Timer
- Default
- Default
- Default
- Default

- LED
- RGB LED
- Short Circuit allowed functions

POWER LIMITS depend on the board used

CIP0/COPI have previously been referred to as MISO/MOSI



SKU code: ASX00031
Full Pinout - Page 6 of 7
Last update: 28 Nov, 2022

DOCS . ARDUINO . CC

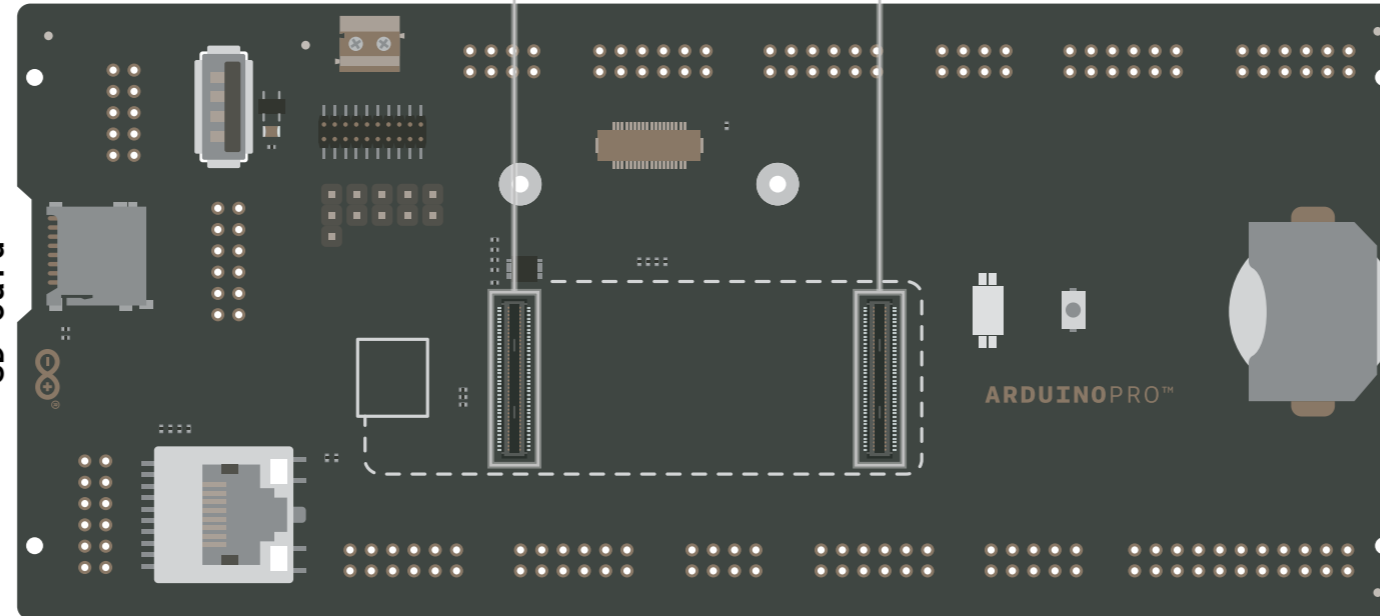


This work is licensed under the Creative Commons Attribution-ShareAlike 4.0 International License. To view a copy of this license, visit <http://creativecommons.org/licenses/by-sa/4.0/> or send a letter to Creative Commons, PO Box 1866, Mountain View, CA 94042, USA.

J1-Female

SWO	79	80	
SWCK	77	78	
SWDIO	75	76	
RESET	73	74	
	71	72	OUT V-SDCARD
	69	70	
	67	68	DMIC D0
			DMIC CK
SDC D3	65	66	OUT VSYS
SDC D2	63	64	I2S D0
SDC D1	61	62	I2S DI
SDC D0	59	60	I2S WS
SDC CMD	57	58	I2S MCK
SDC CLK	55	56	GND
VSYS	53	54	GND
CAN1 RX	51	52	
CAN1 TX	49	50	
GND	47	48	IN VIN
I2C1 SD6	45	46	I2C0 SCL
I2C1 SDA	43	44	I2C0 SDA
VIN	41	42	GND
UART1 CTS	39	40	UART0 CTS
UART1 RTS	37	38	UART0 RTS
UART1 RX	35	36	UART0 RX
UART1 TX	33	34	UART0 TX
GND	31	32	IN VIN
USB1 ID	29	30	
USB1 D-	27	28	USB0 D-
USB1 D+	25	26	USB0 D+
USB1 VBUS	23	24	
VIN	21	22	GND
ETH L2	19	20	DSI CK-
ETH L1	17	18	DSI CK+
	15	16	DSI D0-
	13	14	DSI D0+
	11	12	DSI D1-
	9	10	DSI D1+
ETH B-	7	8	
ETH B+	5	6	
ETH A-	3	4	
ETH A+	1	2	

SD Card



TOP VIEW

J2-Female

CAM D7	2	1	FORCE_BOOTLOADER
CAM D6	4	3	BOOT_SOURCE
CAM D5	6	5	POWER_ON_REQ
CAM D4	8	7	COINCELL
CAM D3	10	9	
CAM D2	12	11	
CAM D1	14	13	
CAM D0	16	15	
CAM VS	18	17	
CAM CLK	20	19	
CAM HS	22	21	
GND	24	23	OUT VCC/+3V3
UART2 TX	26	25	UART3 TX
UART2 RX	28	27	UART3 RX
	30	29	
	32	31	
VCC	34	33	GND
SPI1 CS	36	35	
SPI1 CK	38	37	
SPI1 CIP0	40	39	
SPI1 COPI	42	41	
GND	44	43	OUT VCC/+3V3
GPIO 0	46	45	I2C2 SDA
GPIO 1	48	47	I2C2 SCL
GPIO 2	50	49	SAI CK
GPIO 3	52	51	SAI FS
GPIO 4	54	53	SAI D0
GPIO 5	56	55	
GPIO 6	58	57	GND
PWM 6	60	59	PWM 1
PWM 7	62	61	PWM 2
PWM 8	64	63	PWM 3
PWM 9	66	65	PWM 4
PWM 10	68	67	PWM 5
GND	70	69	OUT VCC/+3V3
ADC VREF-	72	71	OUT ADC VREF+
ADC A4	74	73	ADC A0
ADC A5	76	75	ADC A1
ADC A6	78	77	ADC A2
ADC A7	80	79	ADC A3

Legend:

Power	Power Input	GPIO Digital External	I2C	Default	LED
Ground	Power Output	Analog External	SPI	Default	RGB LED
		Main Part	UART/USART	Default	Short Circuit allowed functions
		High Density Connector pin	Other SERIAL Communication	Default	
		Internal Component	Analog		
		Other Pins (Reset, System Control, Debugging)	PWM/Timer		

POWER LIMITS depend on the board used

i CIP0/COPI have previously been referred to as MISO/MOSI



SKU code: ASX00031
Full Pinout - Page 7 of 7
Last update: 28 Nov, 2022

DOCS . ARDUINO . CC

This work is licensed under the Creative Commons Attribution-ShareAlike 4.0 International License. To view a copy of this license, visit <http://creativecommons.org/licenses/by-sa/4.0/> or send a letter to Creative Commons, PO Box 1866, Mountain View, CA 94042, USA.