

**Legend :**

- Power
- Ground

- IN Power Input
- OUT Power Output

- GPIO Digital External
- Analog External
- Main Part
- Internal Component
- Other Pins (Reset, System Control, Debugging)

- I2C
- SPI
- UART/USART
- Other SERIAL Communication
- Analog
- D Default
- D Default
- D Default
- D Default

- ⚡ LED
- RGB LED

- ⚠ **MAXIMUM** output current per pin is 15 mA
- ⚠ **MAXIMUM** input current per pin is 5 mA
- ⚠ **MAXIMUM** current overall is 25 mA for the sum of all GPIOs and VDDs
- i CIPO/COPI have previously been referred to as MISO/MOSI



SKU code: ABX00071  
Full Pinout - Page 1 of 4  
Last update: 23 Nov, 2023

**DOCS . ARDUINO . CC**

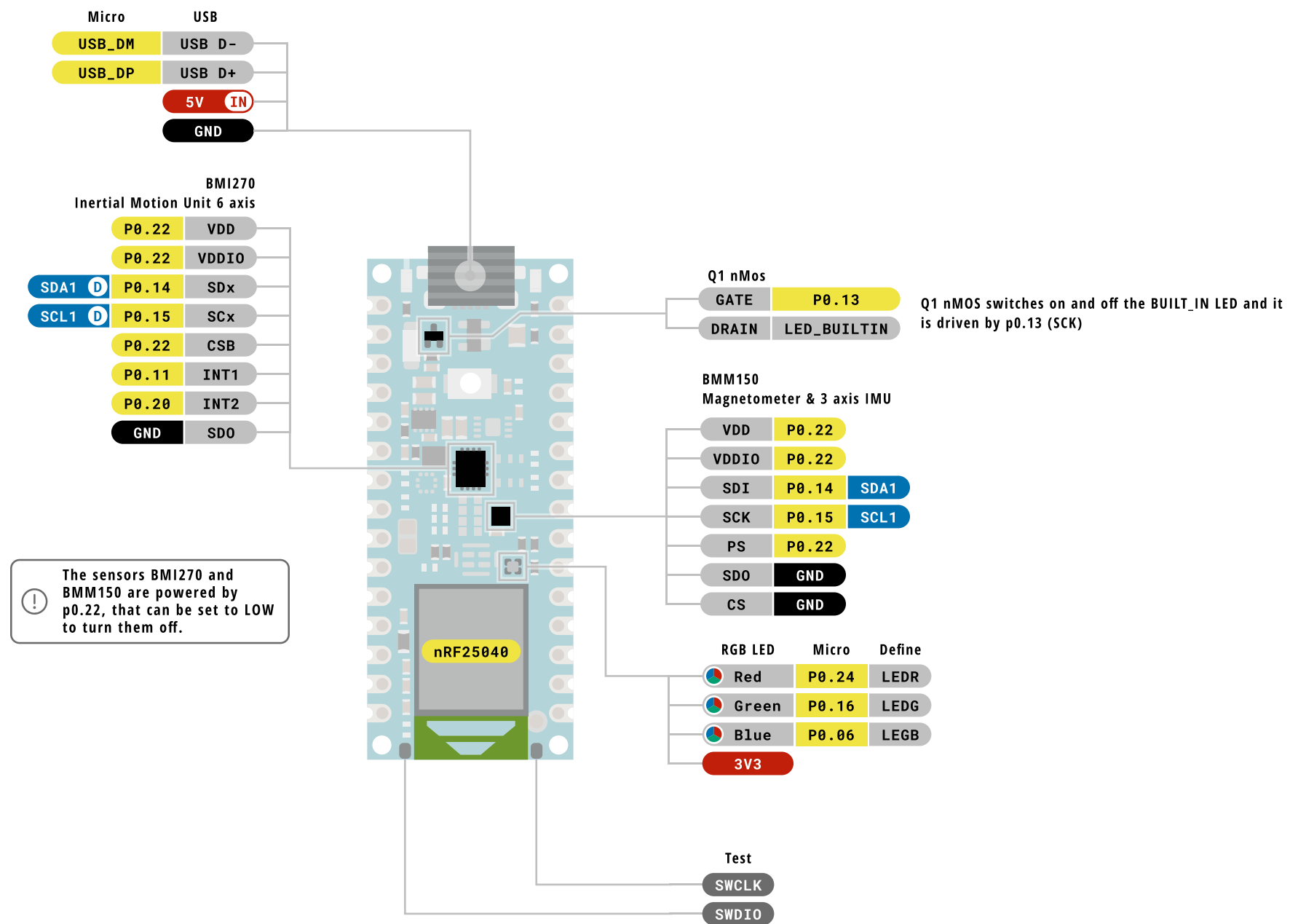
This work is licensed under the Creative Commons Attribution-ShareAlike 4.0 International License. To view a copy of this license, visit <http://creativecommons.org/licenses/by-sa/4.0/> or send a letter to Creative Commons, PO Box 1866, Mountain View, CA 94042, USA.

**WARNING!**

## **Advanced Section**

The following information is for advanced use only and may not be officially supported by Arduino software





**Legend :**

- Power
- Ground

- IN Power Input
- OUT Power Output

- GPIO Digital External
- Analog External
- Main Part
- Internal Component
- Other Pins (Reset, System Contr1, Debugging)

- I2C
- SPI
- UART/USART
- Other SERIAL Communication
- Analog
- D Default
- D Default
- D Default
- D Default

- ! LED
- RGB LED

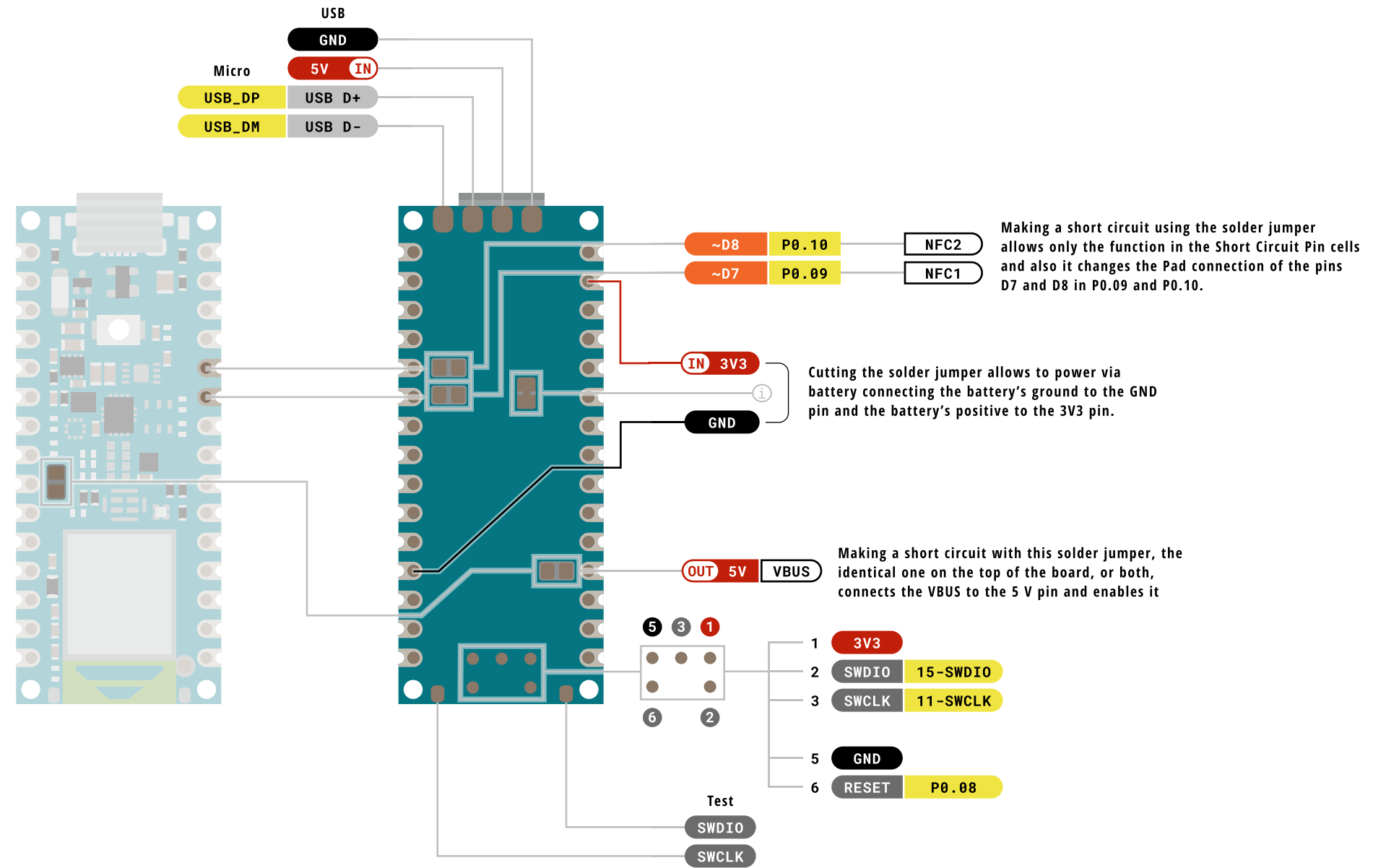
- ⚠ **MAXIMUM** output current per pin is 15 mA
- ⚠ **MAXIMUM** input current per pin is 5 mA
- ⚠ **MAXIMUM** current overall is 25 mA for the sum of all GPIOs and VDDs
- i CIP0/COPI have previously been referred ot as MISO/MOSI



SKU code: ABX00071  
Full Pinout - Page 3 of 4  
Last update: 23 Nov, 2023

**DOCS . ARDUINO . CC**

This work is licensed under the Creative Commons Attribution-ShareAlike 4.0 International License. To view a copy of this license, visit <http://creativecommons.org/licenses/by-sa/4.0/> or send a letter to Creative Commons, PO Box 1866, Mountain View, CA 94042, USA.



**Legend :**

- Power
- Ground

- IN Power Input
- OUT Power Output

- GPIO Digital External
- Analog External
- Main Part
- Internal Component
- Other Pins (Reset, System Control, Debugging)

- I2C
- SPI
- UART/USART
- Other SERIAL Communication
- Analog
- D Default
- D Default
- D Default
- D Default

- LED LED
- RGB LED RGB LED

- ⚠ **MAXIMUM** output current per pin is 15 mA
- ⚠ **MAXIMUM** input current per pin is 5 mA
- ⚠ **MAXIMUM** current overall is 25 mA for the sum of all GPIOs and VDDs
- i CIP0/COPI have previously been referred to as MISO/MOSI



SKU code: ABX00071  
 Full Pinout - Page 4 of 4  
 Last update: 23 Nov, 2023

**DOCS . ARDUINO . CC**

This work is licensed under the Creative Commons Attribution-ShareAlike 4.0 International License. To view a copy of this license, visit <http://creativecommons.org/licenses/by-sa/4.0/> or send a letter to Creative Commons, PO Box 1866, Mountain View, CA 94042, USA.